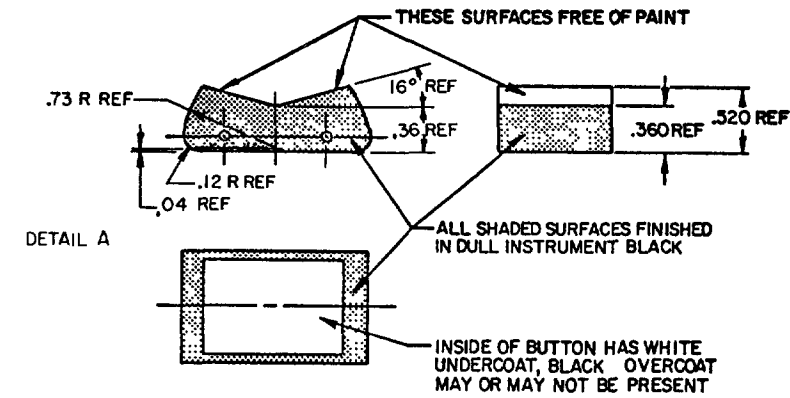
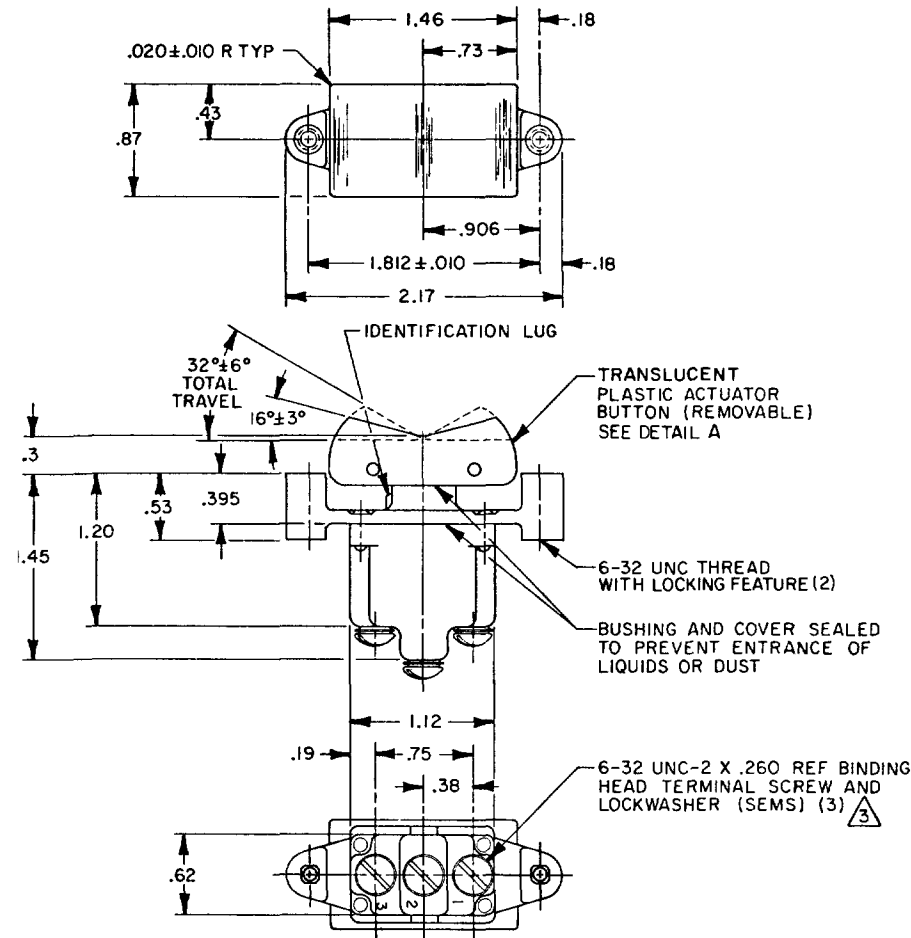


HONEYWELL  
PART NUMBER  
1TP1 SERIES CHART 1

REV	DOCUMENT	CHANGED BY	CHECK
7	0007019	KR 12AUG04	AK



- NOTES
- 1 - MICRO SWITCH CATALOG LISTING MARKED ON SIDE OF SWITCH
  - 2 - SWITCHES WILL WITHSTAND TEMPERATURE OF 160°F
  - 3 - SCREWS FURNISHED UNASSEMBLED
  - 4 - FAA-PMA MUST BE MARKED ON SWITCH
  - 5 - FOR MANUFACTURING DETAIL SEE ASSEMBLY DRAWING 1TP1-2 FOR FAA-PMA
  - 6 - WEIGHT: .10 LB EST

REPLACES 1TP1 SERIES

④	CATALOG LISTING	CIRCUIT WITH BUTTON IN			ELECTRICAL DATA
		LUG SIDE (1-2)	CENTER (1-2)	OPPOSITE LUG (2-3)	
FAA-PMA	⑤ 1TP1-1	ON	OFF	ON	15A-125, 250 OR 277 VAC 1/2HP-125VAC; 1HP-250, 277VAC 5A-125VAC "L" CODE L191
	⑤ 1TP1-2	OFF	NONE	ON	
	⑤ 1TP1-3	ON	NONE	ON	
	⑤ 1TP1-2I	NONE	OFF	ON	
	⑤ 1TP1-3I	NONE	ON	ON	
	Ⓟ	MOM OFF	NONE	ON	10A-125, 250, 277 VAC 1/4HP-125VAC; 1/2HP-250, 277 VAC 3A-125VAC "L" CODE L192
	⑤ 1TP1-5	MOM ON	OFF	ON	
	⑤ 1TP1-6	MOM ON	NONE	OFF	
	⑤ 1TP1-7	MOM ON	OFF	MOM ON	
	⑤ 1TP1-8	MOM ON	NONE	ON	
	⑤ 1TP1-6I	MOM ON	OFF	NONE	

DESIGN UNITS: INCH  
TOLERANCES UNLESS NOTED:

NO PLACE	X	±	
ONE PLACE	.X	±	0.030
TWO PLACE	.XX	±	0.015
THREE PLACE	.XXX	±	0.005
FOUR PLACE	.XXXX	±	
ANGLES		±	

THIRD ANGLE PROJECTION

DRAWN	GJW	12MAY97
CHECK		
THIS DRAWING COVERS A PROPRIETARY ITEM AND IS THE PROPERTY OF HONEYWELL. THIS DRAWING IS NOT TO BE COPIED OR USED WITHOUT THE PERMISSION OF HONEYWELL.		
INTERPRET PER ASME Y14.5M-1994 OTHER HONEYWELL ENGINEERING STANDARDS MAY APPLY		

**Honeywell**

TITLE  
**SWITCH - TOGGLE FLUSH KEY**

SIZE	TYPE	DRAWING NAME	REV
<b>B</b>	<b>I</b>	<b>1TP1 SERIES CHART 1</b>	<b>7</b>
SCALE	1:1	SHEET	1 OF 1