



**AIRPARTS AERO INC**

700 R Street STE 80952  
Lincoln, NE 68501 USA  
(855) 517-2787 phone  
(703) 842-8358 fax  
salesteam@airparts.aero

# P&W JT15D-5

Engine Part number	Engine Serial Number	TSN	CSN
P&W JT15D-5	PCE-JA-0147	3062:45	2433





**AIRPARTS AERO INC**

700 R Street STE 80952  
 Lincoln, NE 68501 USA  
 (855) 517-2787 phone  
 (703) 842-8358 fax  
 salesteam@airparts.aero


AirParts Aero is please to present a pair of JT15D-5 engines removed from a Beechjet 400 which is owned by an AirParts Aero business partner. These engines come from a very well known, vetted source and have been stored and continually maintained during storage. The engines just underwent a thorough boroscope inspection.


ENGINE DISK REPORT							
ESN MSN	PCE-JA-0147	DATE	28-Mar-25				
	RK 190	TSN	3062:45				
	RH	CSN	2433				
POS.							
Part Description	Part Number	Serial Number	Task	Interval EH	Last Done EH	Next Due EH	Remaining EH
Engine- LH	P& W JT15D-5	PCE-JA-0147	HSI	1800:00	1709:15	3509:15	446:30
			Overhaul	3600:00	0:00	3600:00	537:15
Hub Low, Boost Compressor	3038312		Replace	14000:00	00:00	14000:00	10937:15
Disc High Turbine Rotor	3036411		Replace	14000:00	00:00	14000:00	10937:15
Disc Low Turbine Rotor (2nd)	3022212		Replace	14000:00	00:00	14000:00	10937:15
Disc Low Turbine Rotor (3rd)	3041593		Replace	14000:00	00:00	14000:00	10937:15
Hub Low Compressor Rotor	3037911		Replace	12000:00	00:00	12000:00	8937:15
Impeller Centrifugal	3040939		Replace	12000:00	00:00	12000:00	8937:15
Engine Isolator Mount			HSI	1800:00	1709:15	3509:15	446:30

A/C Type : N/A  
 A/C Registration : N/A  
 Reason for BSI :Assessment

Model : JT15D-5  
 A/C MSN : N/A  
 ESN : PCE-JA0147  
 TSN:3062:45

Location : DEL  
 Position:GRD  
 Performed By:Vikas Joshi  
 CSN:2433

REF AMM 72-00-00	LP BOOSTER BLADES
<p><b>CONDITION:</b>            Contamination observed with heavy enviromantal deposit.Nil significant findings.</p>	
<p><b>DISPOSITION:</b>            Acceptable as per AMM.            Serviceable as is.</p>	

REF AMM 72-00-00	LP STATOR VANES
<p><b>CONDITION:</b>            Contamination observed with heavy enviromantal deposit.Nil significant findings.</p>	
<p><b>DISPOSITION:</b>            Acceptable as per AMM.            Serviceable as is.</p>	

A/C Type : N/A  
 A/C Registration : N/A  
 Reason for BSI :Assessment

Model : JT15D-5  
 A/C MSN : N/A  
 ESN : PCE-JA0147  
 TSN:3062:45

Location : DEL  
 Position:GRD  
 Performed By:Vikas Joshi  
 CSN:2433

REF AMM 72-00-00	HP IMPELLER
------------------	-------------

**CONDITION:**  
 Contamination observed with heavy enviromantal deposit.Nil significant findings.

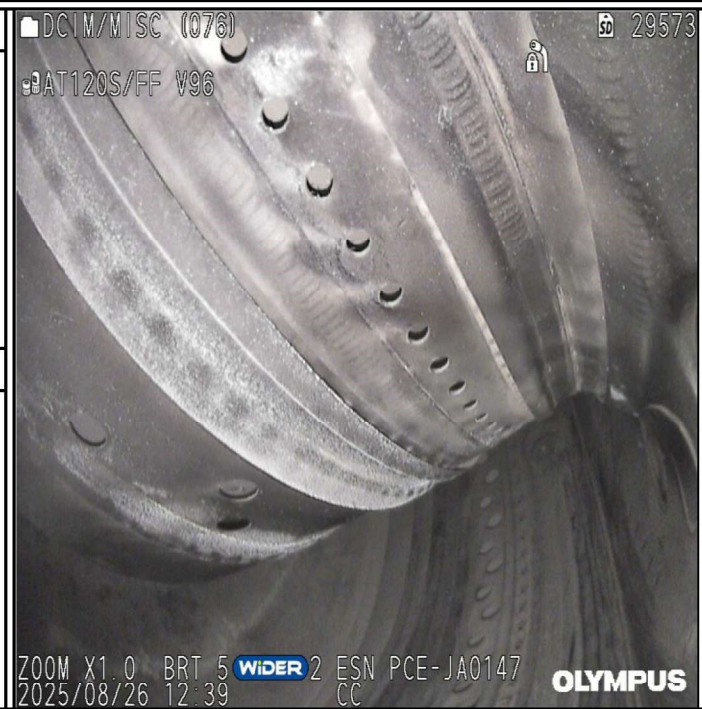
**DISPOSITION:**  
 Acceptable as per AMM.  
 Serviceable as is.



REF AMM 72-00-00	COMBUSTION CHAMBER
------------------	--------------------

**CONDITION:**  
 Contamination observed with heavy enviromantal deposit.Nil significant findings.



**DISPOSITION:**  
 Acceptable as per AMM.  
 Serviceable as is.



A/C Type : N/A  
 A/C Registration : N/A  
 Reason for BSI :Assessment

Model : JT15D-5  
 A/C MSN : N/A  
 ESN : PCE-JA0147  
 TSN:3062:45


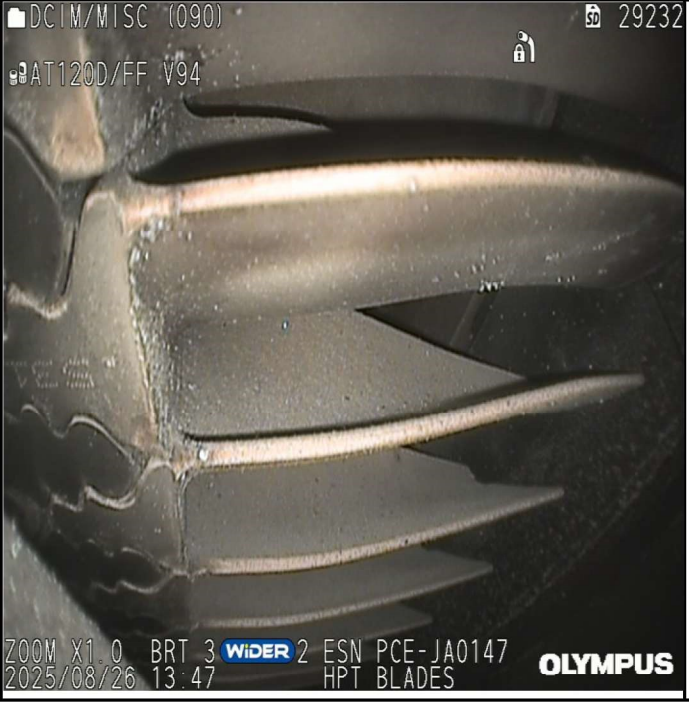
Location : DEL  
 Position:GRD  
 Performed By:Vikas Joshi  
 CSN:2433

REF AMM 72-00-00	FUEL NOZZLES
<p><b>CONDITION:</b>                      Contamination observed with heavy enviromantal deposit.Nil significant findings.</p>	
<p><b>DISPOSITION:</b>                      Contamination observed with heavy enviromantal deposit.Nil significant findings.</p>	
REF AMM 72-00-00	LARGE EXIT DUCT
<p><b>CONDITION:</b>                      Contamination observed with heavy enviromantal deposit.Nil significant findings.</p>	
<p><b>DISPOSITION:</b>                      Acceptable as per AMM.                      Serviceable as is.</p>	

A/C Type : N/A  
 A/C Registration : N/A  
 Reason for BSI :Assessment

Model : JT15D-5  
 A/C MSN : N/A  
 ESN : PCE-JA0147  
 TSN:3062:45

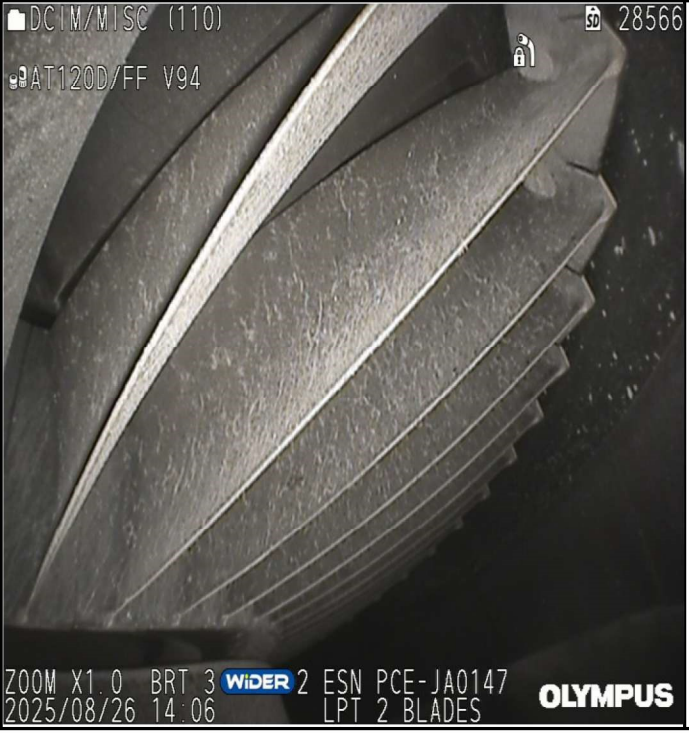
Location : DEL  
 Position:GRD  
 Performed By:Vikas Joshi  
 CSN:2433

REF AMM 72-00-00	SMALL EXIT DUCT
<p><b>CONDITION:</b>            Contamination observed with heavy enviromantal deposit.Nil significant findings.</p>	
<p><b>DISPOSITION:</b>            Acceptable as per AMM.            Serviceable as is.</p>	
REF AMM 72-00-00	HPT BLADES
<p><b>CONDITION:</b>            Observed nonmeasurable dent on trailing edge ,towards tip area of QTY-02 blades. Also contamination observed with heavy enviromantal deposit, through out the stage, Nil significant findings.</p>	
<p><b>DISPOSITION:</b>            Acceptable as per AMM.            Serviceable as is.</p>	

A/C Type : N/A  
 A/C Registration : N/A  
 Reason for BSI :Assessment

Model : JT15D-5  
 A/C MSN : N/A  
 ESN : PCE-JA0147  
 TSN:3062:45

Location : DEL  
 Position:GRD  
 Performed By:Vikas Joshi  
 CSN:2433

REF AMM 72-00-00	LPT STAGE 2 BLADES
<p><b>CONDITION:</b>                      Contamination observed with heavy enviromantal deposit.Nil significant findings.</p>	
<p><b>DISPOSITION:</b>                      Acceptable as per AMM.                      Serviceable as is.</p>	

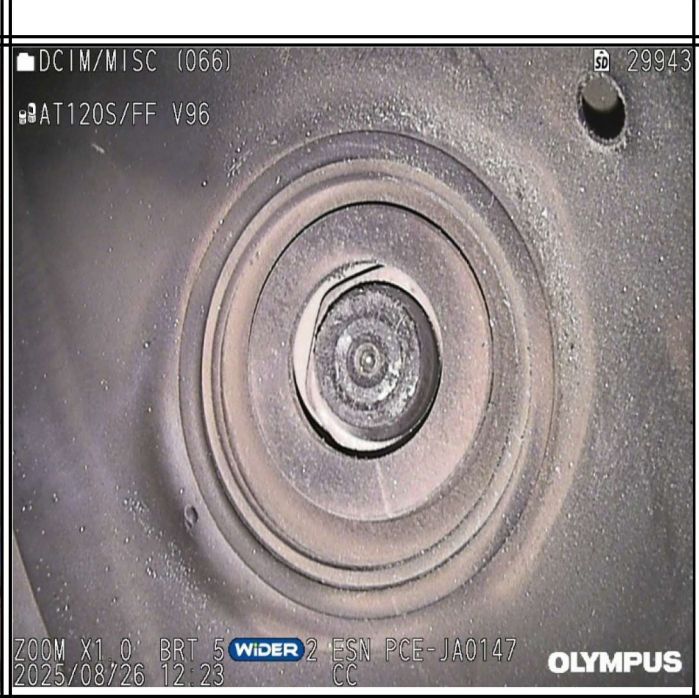
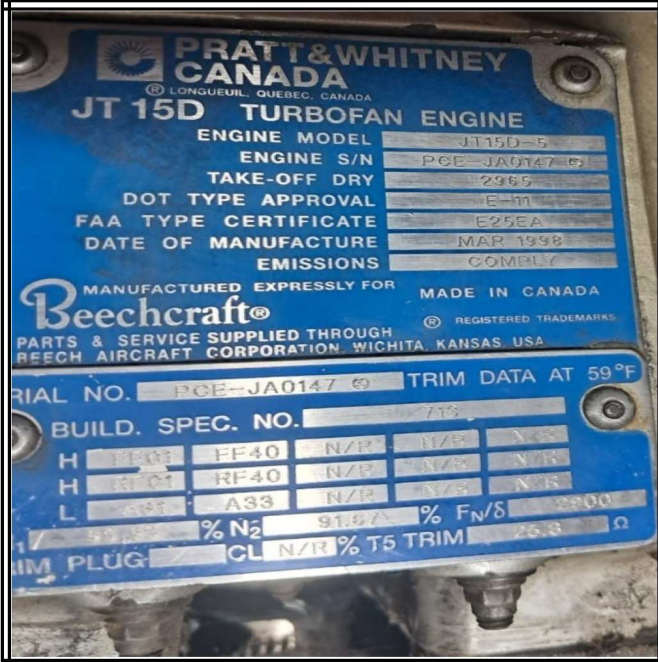
VIDEO BOROSCOPE INSPECTION OF ENGINE JT15D-5 REPORT

A/C Type : N/A  
 A/C Registration : N/A  
 Reason for BSI :Assessment

Model : JT15D-5  
 A/C MSN : N/A  
 ESN : PCE-JA0147  
 TSN:3062:45

Location : DEL  
 Position:GRD  
 Performed By:Vikas Joshi  
 CSN:2433

ADDITIONAL COMMENTS AND PICTURES:



VIDEO BOROSCOPE INSPECTION OF ENGINE JT15D-5 REPORT

A/C Type : N/A  
A/C Registration : N/A  
Reason for BSI :Assessment

Model : JT15D-5  
A/C MSN : N/A  
ESN : PCE-JA0147  
TSN:3062:45

Location : DEL  
Position:GRD  
Performed By:Vikas Joshi  
CSN:2433

ADDITIONAL COMMENTS AND PICTURES:	
 <p>DCIM/MISC (096) 28981 AT120D/FF V94 ZOOM X1.0 BRT 1 WIDER 2 ESN PCE-JA0147 2025/08/26 13:54 HPT BLADES OLYMPUS</p>	 <p>DCIM/MISC (008) 30696 AT120S/NF V96 ZOOM X1.0 BRT 5 WIDER 2 ESN PCE-JA0147 2025/08/26 11:41 BOOSTER BLADE OLYMPUS</p>
 <p>DCIM/MISC (084) 29462 AT120S/FF V96 ZOOM X1.0 BRT 5 WIDER 2 ESN PCE-JA0147 2025/08/26 12:42 CC OLYMPUS</p>	 <p>DCIM/MISC (028) 30609 AT120S/NF V96 ZOOM X1.0 BRT 5 WIDER 2 ESN PCE-JA0147 2025/08/26 11:50 LP STR VANES OLYMPUS</p>

A/C Type : N/A  
A/C Registration : N/A  
Reason for BSI :Asessment

Model : JT15D-5  
A/C MSN: N/A  
ESN : PCE-JA0147  
TSN:3062:45

Location : DEL  
Position:GRD  
Performed By:Vikas Joshi  
CSN:2433

**Summary**

1. Performed VBSI as per below mention references :-	
TASK	Limitation
ENGINE BORESCOPE INSPECTION REF. AMM 72-00-00	Nil

**Result**

**Engine internal hardware condition is satisfactory as per AMM. Engine water wash is recommended.**

ALL BORESCOPE PLUGS REINSTALLED BY OMNISCIENT AVIATORS INSPECTIONS EMPLOYEE: YES  NO

THIS REPORT & THE ACCOMPANYING VIDEO IS SUBMITTED SUBJECT TO THE CONDITION THAT IS UNDERSTOOD & AGREED THAT THE CONTENTS ARE BASED ON DILIGENT INSPECTION & ARE EXCLUSIVE OF LATENT DEFECTS IN MATERIALS, RIGGING OR SYSTEMS NOT DETECTABLE WITHOUT REMOVAL OR DISASSEMBLY; BUT ARE BELIEVED TO BE CORRECT & FAIRLY REPRESENTATIVE OF THE CONDITION OF THE ENGINE. THIS SURVEY IS SUBMITTED WITHOUT PREJUDICE & IN CONFIDENCE TO THE NAMED CLIENT & IS WITHOUT RESPONSIBILITY TO OTHERS TO WHOM IT MAY BE SHOWN.

DATE - 26/08/2025

Report prepared by

*J,,fo*

Vikas Joshi